

Supplement Quartz, Janvier 2021
Inverses Circé remarquable

recueil réalisé par P. Răican

Pour mon fils, Liviu



Edmund Dulac - Circé l'Enchanteresse

Supplement Quartz, Janvier 2021

Inverses Circé remarquable

recueil réalisé par P. Răican
pour mon fils, Liviu

Dans la nuit du Nouvel An 1968, **Pierre Montréal** annonçait la naissance d'un nouveau genre dans la composition: **le genre Circé**(^{*}). Pierre lui-même ne soupçonnait probablement pas la popularité dont jouiraient plus tard ces nouvelles règles. Aujourd'hui le genre Circé se manifeste sous des formes et variantes multiples, tout en conservant néanmoins l'élément brillant introduit dans le jeu: la renaissance.



Les problèmes regroupés ci-dessous sont tous **des inverses Circé**, l'une des combinaisons les plus spectaculaires, selon moi, entre un genre orthodoxe et une condition féerique. L'ordre de reproduction est selon **le nom de l'auteur** (et l'ordre des noms n'est pas alphabétique). La base de données utilisée est Echecs.DB de **WinChloe**, avec l'accord de Christian Poisson.

La liste des problèmes n'est, bien sur, pas exhaustive. J'ai éliminé les problèmes très courts (s#2 ou s#3) ou les problèmes avec très peu de renaissances. Il s'agit donc d'un recueil en quelque sorte subjectif.

Tulcea, Janvier 2021

() Lors d'une prise, la pièce capturée renaît sur la case qu'elle occupait au début d'une partie d'échecs: Dame blanche en d1, dame noire en d8, etc. (la règle ne s'applique pas aux Rois). Les Cavaliers et les Tours renaissent sur la case de la même couleur que celle de la prise; les Pions sur la case correspondante de la colonne sur laquelle ils ont été capturés. La prise est orthodoxe si la case de renaissance est occupée par une pièce quelconque.*

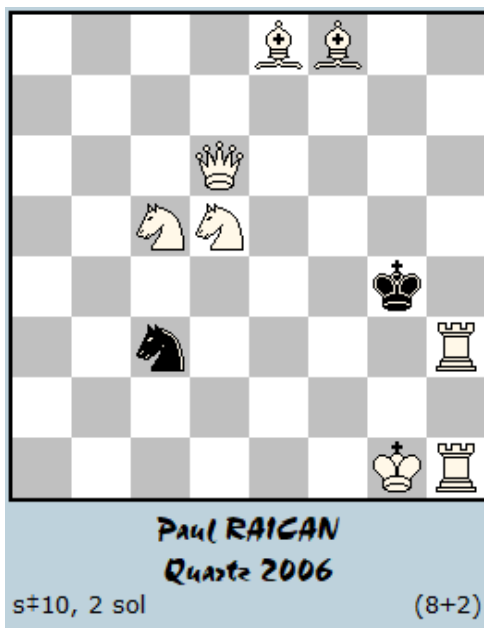
Vlaicu CRISAN:

Les inverses Circé qui suivent ne peuvent qu'étonner le lecteur par la diversité des idées présentées. On trouve ici des promotions et des manœuvres logiques, des miniatures et des constructions plus imposantes, des solutions courts avec plusieurs variantes et des solutions longues monophasiques. Le seul lien est le nombre assez élevé de renaissances.

Les pièces capturées peuvent être pris de nouveau ou créer des batteries, bloquer des fuites ou intercepter des échecs - l'imagination des auteurs ne cesse pas dans le domaine des féériques. Cependant, cette sélection n'est pas exhaustive - elle montre justement une petite partie. Jouez les solutions, amusez-vous bien et puis demandez-vous: est-ce que tout a été déjà fait?

Klaus WENDA:

Between 1980 and 2000 my fairy-chess activities mainly were concentrated on the conditions Circe and Madrasi. Later on AntiCirce compositions became my preferred fairy kind. It's a nice experience to see 8 of my Circe-selfmates reprinted here after so many years. KW2 is my favourite among all my Circe-problems. My Austrian compatriot Heinrich Bernleitner (1937-2010) was a strong game-over-the-board player who liked problem-chess as well.



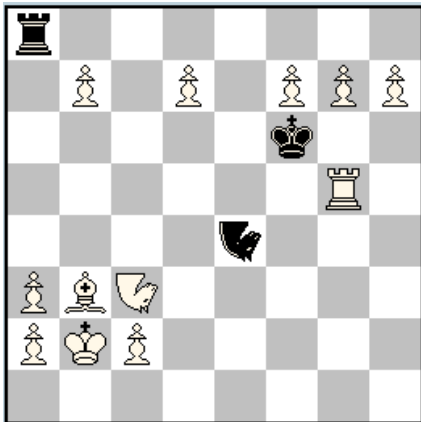
Sol. 1) 1.Rg3+ Kf5 2.Rg5+ K×g5(Ra1)
3.Qg3+ Kf5 4.Se3+ Kf6 5.Qd6+ Kg5
6.Se6+ Kf6 7.Sd4+ Kg5 8.Qe7+ Kf4
9.Rf1+ Kg3 Se2+ S×e2(Sb1)‡

Sol. 2) 1.Se3+ Kg5 2.Se4+ S×e4(Sb1)
3.Be7+ Sf6 4.Qc5+ Kf4 5.Bd6+ Ke4
6.Qe5+ Kd3 7.Qd5+ Ke2 8.Bb5+ Ke1
9.Kh2+ Kf2 Sg4+ S×g4‡

Inverses Circé remarquables (ordonnées par auteurs)

1. Klaus WENDA

KW1



Klaus WENDA
Diagrammes 1994
4°-5° Prix e.a.

s=6 (12+3) C+
Circé
♣♠=Noctambule

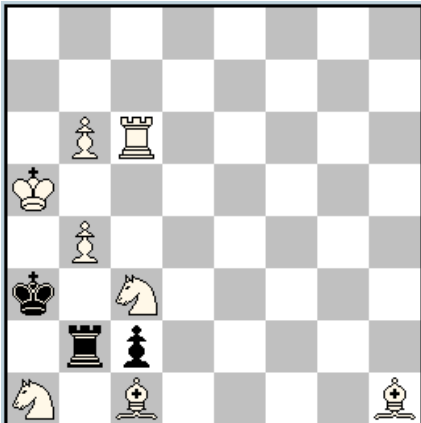
KW1) Sol: 1.d8=B+ Rxd8(Bç1) 2.g8=S+ R×g8(Sb1)
3.f8=R+ R×f8(Ra1) 4.h8=Q+ R×h8(Qd1) 5.b8=N+ R×b8
6.Qd6+ N×d6‡

KW2) Sol: 1.Sb3! K×b3(Sb1) 2.Sd2+ Ka3 3.Sf1 Kb3
4.Bd5+ Ka3 5.Rç4 Kb3 6.Sd2+ Ka3 7.Sd4 Kb3 8.Rç6+
Ka3 9.Bb3 K×b3(Bf1) 10.Bç4+ Ka3 11.Ba6 Kb3 12.Sd2+
Ka3 13.Sf3 Kb3 14.Sd4+ Ka3 15.S×ç2(ç7)+ Kb3 16.Sa1+
Ka3 17.b5 ç×b6+ 18.R×b6(b7) b×a6(Bf1) 19.b×a6(a7)
a×b6‡

KW3) Sol: 1.Bb1! [2.B×a2(Sg8)+ Kf5 3.Bb1+ Ké6
4.Q×é7(Rh8)+ S×é7(Qd1)‡] 1. ...S~ 2.Qç8+ Rd7
3.B×S(Sb8) a5 4.Q×d7(Ra8)+ S×d7(Qd1)‡

KW4) Sol: 1.Rc1! d6 2.R×ç5(Sb8)+ d×ç5(Ra1) 3.Rç1 S~
4.R×ç5(ç7)+ S×ç5(Ra1) 5.0-0-0 ç×b6(b2) 6.Sé6+
K×é6(Sb1) 7.Qb3+ S×b3‡

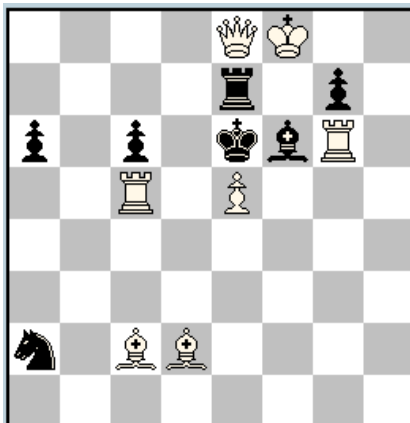
KW2



Klaus WENDA
Leenschaek 1990 (v)
1° Prix

s=19 (8+3) C+
Circé

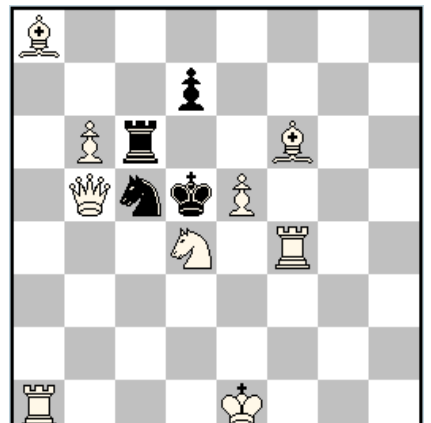
KW3



Klaus WENDA
Thèmes-64 1984-85
5° Prix

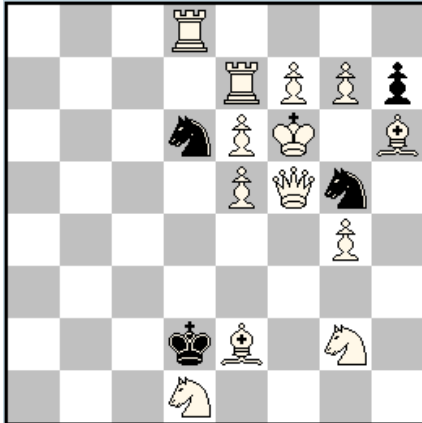
s=4 (7+7) C+
Circé

KW4



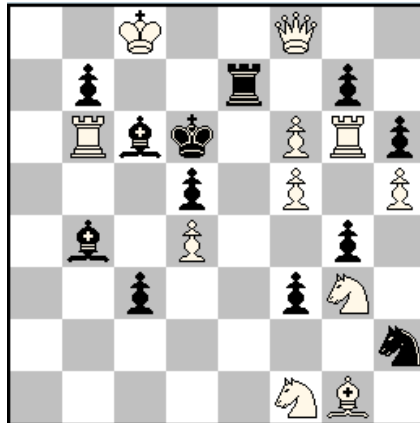
Klaus WENDA
Heinrich BERNLEITNER
Die Schwalbe 1996
1° Prix

s=7 (9+4) C+
Circé

KW5

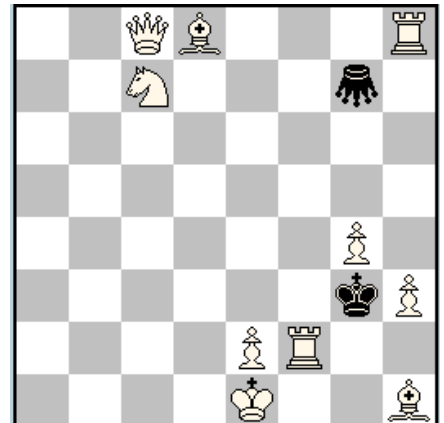
Klaus WENDA
Heinrich BERNLEITNER
Die Schwalbe 1989
 3^o Prix

s=8 (13+4) C+
 Circé

KW6

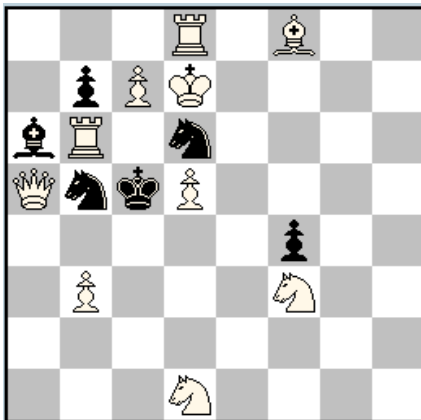
Klaus WENDA
dédié à P. Kniest pour ses 70 ans
(Leenschach 1984 (v))
 2^o Prix

s=8 (11+12) C+
 Circé

KW7

Klaus WENDA
Die Schwalbe 2000

s=6 (10+2) C+
 Circé
 ♖=Sauterelle

KW8

Klaus WENDA
 (version)
Die Schwalbe 1987

s=9 (10+6)
 Circé

KW5) Sol: 1.Rb7! Kç1 2.Rb1+ Kd2 3.Rbb8 Kç1 4.éxd6 Kd2 5.Rb7 Kç1 6.Ré7 Kd2 7.d7 Kç1 8.B×g5(Sb8)+ S×d7(d2)‡

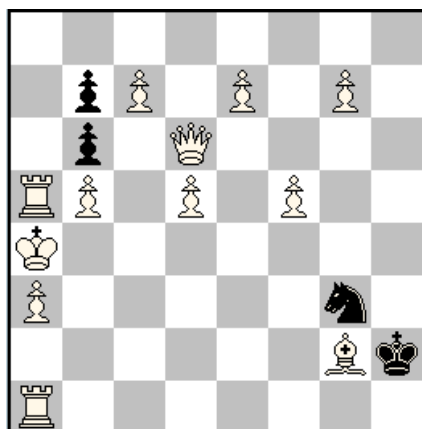
KW6) Sol: 1.Se3! [2.Qd8+ Rd7 3.Se4+ dxe4(Sb1) 4.Bxh2(Sb8)+ g3 5.Qxd7(Ra8) Sxd7(Qd1)#] 1. ...Sf1 2.Sg×f1(Sg8) S×f6(f2) 3.Qd8+ Rd7 4.R×f6(Sb8)+ g×f6(Ra1) 5.Ré1 Sa6 6.Qf8+ Ré7 7.R×a6(Sg8) ~ 8.Q×é7(Rh8)+ S×é7(Qd1)‡

KW7) Sol: 1.Bc6! Gb7 2.Sd5 G×d5(Sb1) 3.Qb7 G×b7(Qd1) 4.Bh4+ K×h3(h2) 5.Bh1 K×g4(g2) 6.Sd2 G×h1(Bf1)‡

KW8) Sol: 1.Sf2! Kxd5(Pd2) 2.Ke7 Kc5 3.Kf6 Kd5 4.d3 Kc5 5.Sh3 Kd5 6.Ke7 Kc5 7.Kd7 Kd5 8.Sxf4(Pf7)+ Kc5 9.Rxb5(Sg8)+ Bxb5(Rh1)‡

2. Alexandre LEHMKUHL

AL1

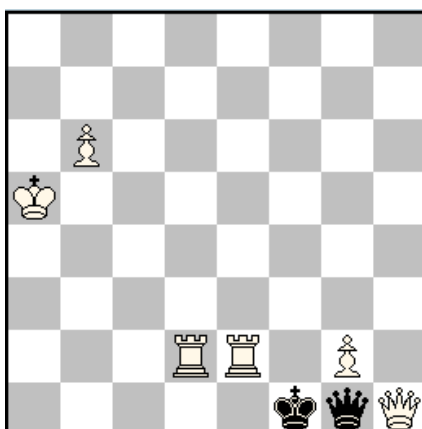


Alexandre LEHMKUHL
The Problemist 1979
2^o Prix

s=10
Circé

(12+4)

AL2

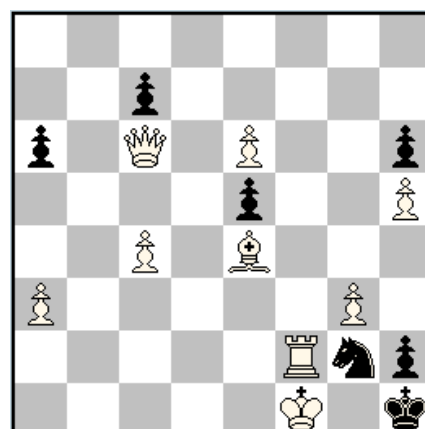


Alexandre LEHMKUHL
Die Schwalbe (avant 1990) (v)

s=7
Circé

(6+2) C+

AL3

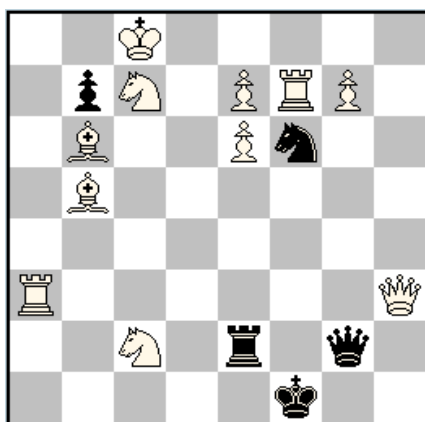


Alexandre LEHMKUHL
Jeenschach 1978
3^o Prix

s=7
Circé

(9+7) C+

AL4



Alexandre LEHMKUHL
Jeenschach 1978
2^o Mention d'Honneur

s=3
Circé

(11+5) C+

AL1) Sol: 1.Rg1! b×a5(Ra1) 2.Ra2 b6 3.Qh6+ Sh5
4.Bh3+ S×g7(g2) 5.g4+ S×f5(f2) 6.f3+ S×é7(é2) 7.é4+
S×d5(d2) 8.d3+ S×ç7(ç2) 9.ç3+ S×b5(b2) 10.b3+
S×ç3(ç2)‡

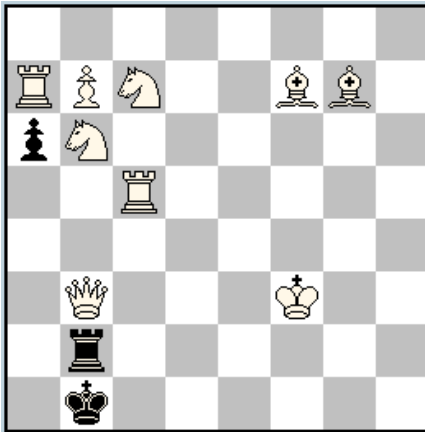
AL2) Sol: 1.Rf2+ Ké1 2.b7 Qf1 3.b8=S Qg1 4.Sd7 Qf1
5.Sb6 Qg1 6.Rfé2+ Kf1 7.Ka6 Q×b6(Sg1)‡

AL3) Sol: 1.c5! a5 2.Qa4 ç6 3.B×ç6(ç7) é4 4.Q×é4(é7)
a4 5.R×g2(Sg8) Sf6 6.Rf2+ S×é4(Qd1) 7.Qé1
S×g3(g2)‡

AL4) Sol: 1.e8=S! Zz
1...Q×g7(g2) 2.g3+ Q×g3(g2) 3.Qh1+ Q×ç7(Sg1)‡
1...R×é6(é2) 2.é4+ R×é4(é2) 3.Ra1+ R×é8(Sb1)‡

3. Bertil GEDDA

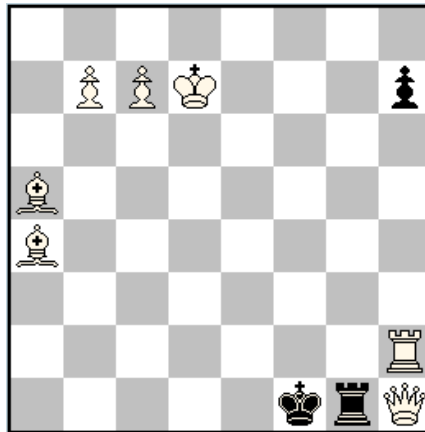
BG1



Bertil GEDDA
T.T. Spångaren 1982-83 (v)
1° Prix

s≠8 (9+3)
Circé

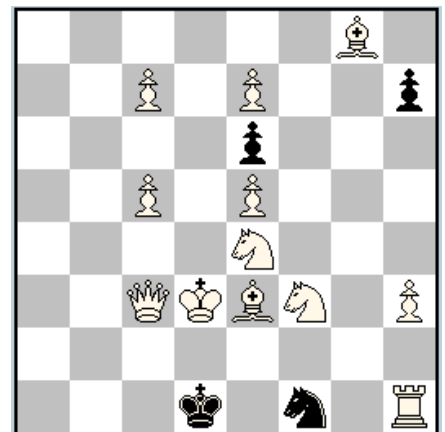
BG2



Bertil GEDDA
Thèmes-64 1981
1° Prix

s≠6 (7+3) C+
Circé

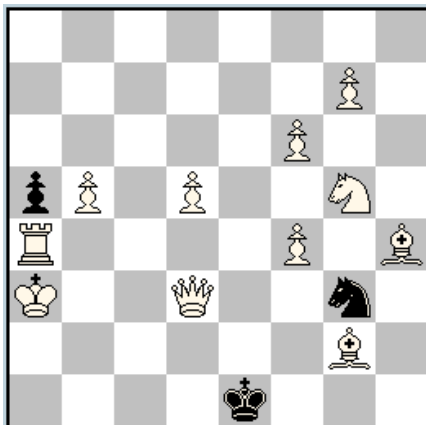
BG3



Bertil GEDDA
Die Schwalbe 1983
1° Mention d'Honneur

s≠6 (12+4) C+
Circé

BG4



Bertil GEDDA
Lennart LARSSON
Schach-Echo 1981 (v)

s≠12 (11+3)
Circé

BG1) Sol: 1.b8=B! zz

1. ...Ka1 2.Rxa6(Pa7)+ Kb1 3.Sb5 axb6(Sg1) 4.Qb4 Rb3+ 5.Kg2 Rb2+ 6.Kh1 Rb3 7.Bh2 Rb2 8.Qe1+ R×h2(Bc1)‡

1. ...a5 2.Sa4 Ka1 3.Ke4 Kb1 4.Kd5 Ka1 5.Kc6 Kb1 6.Kb7 Ka1 7.Ka8 Kb1 8.Qd1+ Rxb8(Bc1)‡

BG2) Sol: 1.b8=S! zz

1...h6 2.Kd8 h5 3.Bé8 h4 4.Sd7 h3 5.Bb6 Ké1 6.Q×g1(Rh8)+ R×é8(Bf1)‡

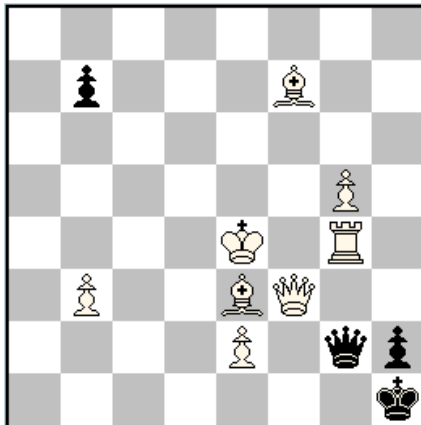
1...h5 2.Rg2 h4 3.Qh3 Rh1 4.Kç8 R~ 5.Bd7 Rh1 6.Q×h1(Ra8)+ R×b8(Sg1)‡

BG3) Sol: 1.e8=B! zz

1...h5 2.B×e6(e7) h4 3.Bç4 e6 4.Sed2 S×d2(Sg1) 5.Ba4+ Sb3 6.Sd4 S×c5(c2)‡

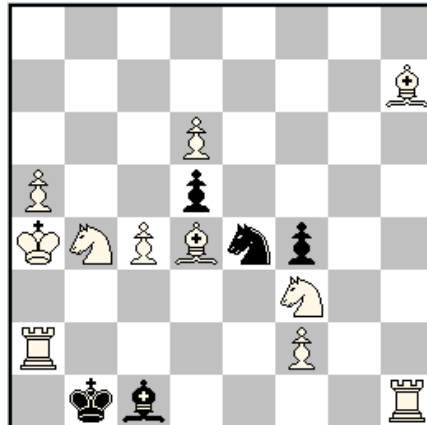
1...h6 2.c8=R h5 3.Rd8 h4 4.Sh2 S×h2(Sg1) 5.Bh5+ Sg4,Sf3 6.Rd4 S×e5(e2)‡

BG4) Sol: 1.g8=B! Kf2 2.Sh3+ Ké1 3.f5 S×f5(f2) 4.Qé3+ Kd1 5.Bf3+ Kç2 6.Qd3+ Kç1 7.Bg5+ Sé3 8.Bf4 S×d5(d2) 9.Qç3+ Kb1 10.Qç2+ Ka1 11.Bé5+ Sç3 12.Bb3 S×b5(b2)‡

BG5

Bestil GEDDA
diagrammes 1982-84
Recommandé

s±4 (8+4) C+
 Circé

BG6

Bestil GEDDA
leenschaak 1982
2° Mention d'Honneur

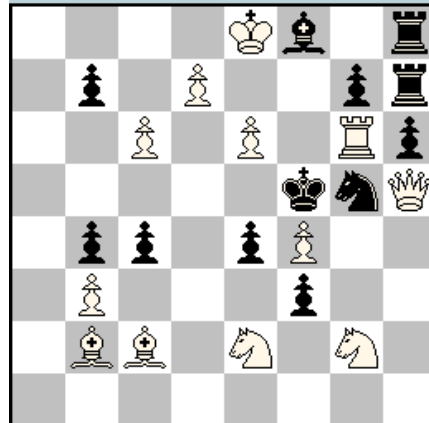
s±4 (11+5) C+
 Circé

BG5) Sol: 1.Bd5! zz

1...b5 2.Kd4 b4 3.Qé4 Qf3
 4.Qb1+ Q×d5(Bf1)‡
 1...b6 2.Kf4 b5 3.Bé4 b4
 4.Rh4 Q×g5(g2)‡

BG6) Sol: 1.Ba1! zz

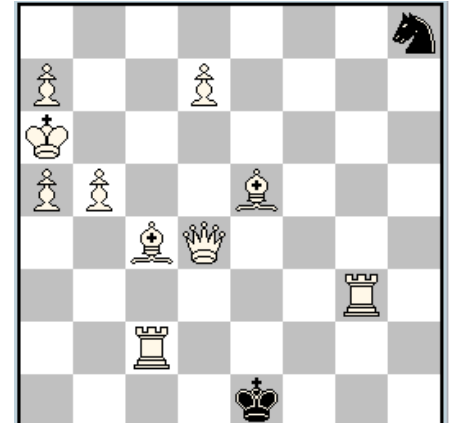
1...d×ç4(ç2) 2.Rb2+ K×a1
 3.Ra2+ Kb1 4.ç3 S×ç3(ç2)‡
 1...d4 2.S×d4(d7) f3 3.Sdç6
 d×ç6 4.ç5 S×ç5(ç2)‡

4. Hans Peter REHM**HPR1**

Bernd ELLINGHOVEN
Hans Peter REHM
dédié à K. Wenda
France - R.F.A. 1984-89
2° Place

s±4 (12+12) C+
 Circé

HPR1) Sol: 1.cxb7! [2.b8=R
 3.Rb5+ Bç5+ 4.R×ç5(Bf8)+
 B×ç5(Ra1)‡, 3.Rç8 [4.Rç5+
 B×ç5(Ra1)‡]]]
 1...f×g2(Sb1) 2.Sd4+
 K×f4(f2) **3.b8=Q+** Bd6+
 4.Q×d6(Bf8)+ B×d6(Qd1)‡
 1...f×é2(Sb1) 2.Sé3+
 K×f4(f2) **3.b8=B+** Bd6+
 4.B×d6(Bf8)+ B×d6(Bç1)‡
 1...f2 **2.b8=S** (2.b8=R?
f1=S! 3.Rb5+ Bc5
 4.R×ç5(Bf8)+ B×ç5(Ra1)
 5.Rxf1(Sg8)!) ~ 3.Sc6 ~
 4.Se7+ Bxe7(Sg1)‡

HPR2

Hans Peter REHM
Gerard SMITS
Probleemblad 1985 (v)
2° Prix

s±7 (10+2)
 Circé

HPR2) Sol: 1.d8=Q! S~ 2.Qa1+ S×é5(Bç1) 3.Rg1+ S×ç4(Bf1) 4.Bb2+ S×b2(Bç1) 5.Bd3+
 S×d3(Bf1) 6.Bé2+ Kf2 7.Qb6+ Sç5‡

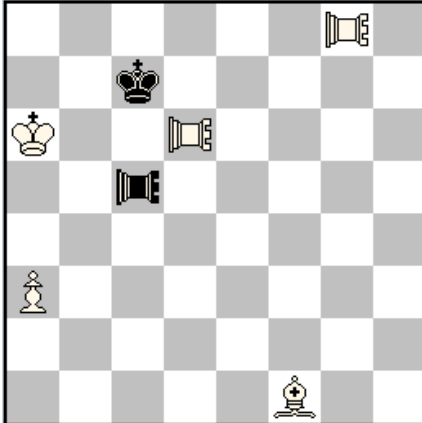
5. Gerard SMITS

GS1) Sol (fr.): 1.Fc4!

(1.Fb5? TL×b5-a5(Ff1)+
2.R×a5(TLa1)!)!

1. ...TL×ç4-ç3(Ff1) 2.Fd3
TL×d3-é3(Ff1) 3.Fé2 TL×é2-
é1(Ff1) 4.Ra7 TL×f1-g1(Ff1)
5.Ra8 TL×f1-é1(Ff1) 6.Fé2
TL×é2-é3(Ff1) 7.Fd3 TL×d3-
ç3(Ff1) 8.Fç4 TL×ç4-ç5(Ff1)
9.Fb5 TL×b5-a5(Ff1) 10.Fç4
TL×a3-a2 11.F×a2(TLa1)
TL×a2-a3(Ff1) 12.Fd3 TL×d3-
é3(Ff1) 13.Fé2 TL×é2-é1(Ff1)
14.Ra7 TL×f1-g1(Ff1) 15.Ra6
TL×f1-é1(Ff1) 16.Fé2 TL×é2-
é3(Ff1) 17.Fd3 TL×d3-ç3(Ff1)
18.Fç4 TL×ç4-ç5(Ff1) 19.Fb5
TL×b5-a5(Ff1) ‡

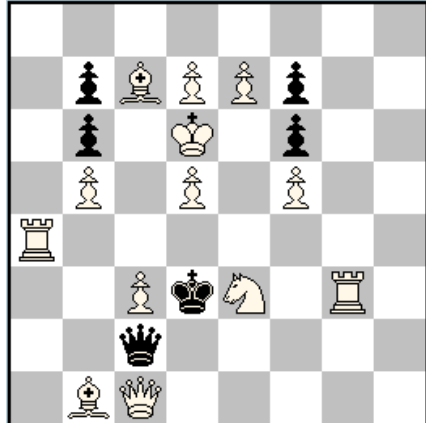
GS1



Gerard SMITS
Mémorial D. Blondel Phénix
2014-15
1° Prix

s=19
Circé
♖♗=Tour-Locuste (5+2)

GS2



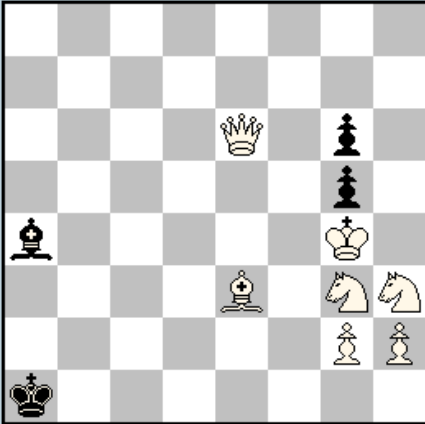
Gerard SMITS
Mat 1983

s=3
Circé (13+6) C+

GS2) Sol: 1.Ra1! zz 1...Ké2 2.Q×ç2(Qd8)+ Ké1 3.Ba2+ Q×ç7(Bç1) ‡
1...Ké4 2.B×ç2(Qd8)+ Kf4 3.Sf1+ Q×d7(d2) ‡
1...K×ç3 2.S×ç2(Qd8)+ Kç4 3.Qf1+ Q×é7(é2) ‡

6. Heinz WINTERBERG

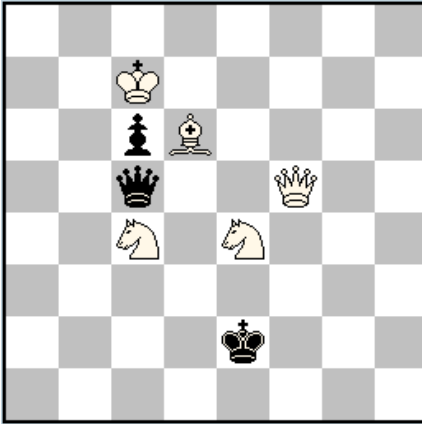
HW1



Heinz WINTERBERG
Rex Multiplex 1985

s=9
Circé (7+4) C+

HW2



Heinz WINTERBERG
Diagrammes 1986

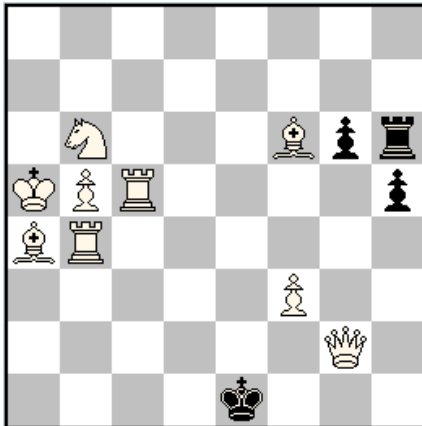
s=7
Circé (5+3) C+

HW1) Sol: 1.Bd4+ Kb1
2.Qb3+ Kç1 3.Qb2+ Kd1
4.Sf2+ Ké1 5.Qç1+ Bd1+
6.Kh3 g4+ 7.S×g4(g7) g5
8.Bé3 g6 9.Qa1
B×g4(Sb1) ‡

HW2) Sol: 1.Sc3+ Ké1
2.Bg3+ Qf2 3.Qé4+ Kf1
4.Qh1+ Qg1 5.Kb7 ç5
6.Sb6 ç4 7.Ka6
Q×b6(Sg1) ‡

Definition (Locuste): se déplace comme une Sauterelle, mais par-dessus une pièce adverse qui est alors capturée, et ceci à condition que la case d'arrivée soit vide. Une Locuste ne peut donc jouer qu'en prenant. **Tour-Locuste:** Locuste jouant sur les lignes de la Tour.

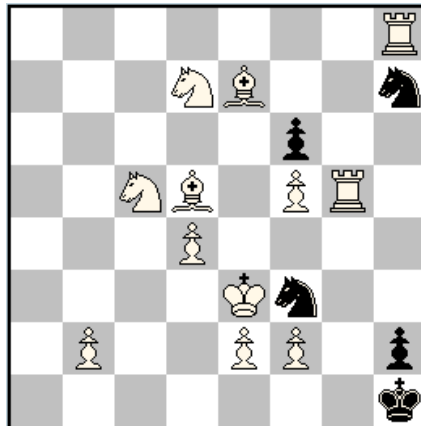
HW3



Heinz WINTERBERG
Leenschach 1978

s±5 (9+4) C+
Circé

HW4



Heinz WINTERBERG
Leenschach 1991
8° Recommandé e.a.

s±5 (12+5) C+
Circé

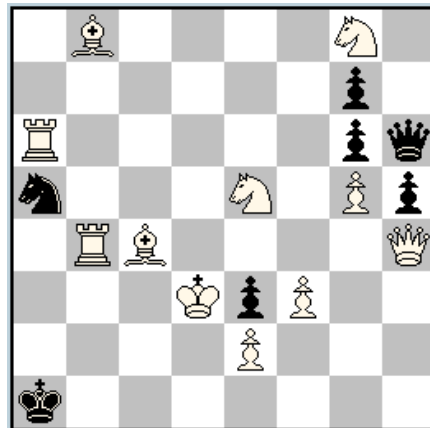
HW3) Sol: 1.R×h5(h7)!

g5 2.Rb1+ R×f6(Bç1) 3.Bf4+
g×f4(Bç1) 4.B×f4(f7)+
R×f4(Bç1) 5.Rh1+
R×a4(Bf1)‡

HW4) Sol: 1.Ra8! Sf8 2.Ra1+

S×d7(Sb1) 3.Sa3+ S×ç5(Sg1)
4.S×f3(Sg8)+ S×é7(Bç1)
5.Bd2+ S×d5(Bf1)‡

HW5



Heinz WINTERBERG
Schach-Echo 1976

s±5 (11+7) C+
Circé

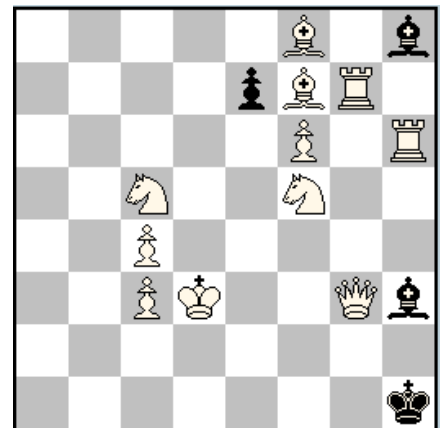
HW5) Sol: 1.Q×h5(h7)!

Q×g5(g2) 2.Qh1+
Q×é5(Sg1) 3.Sh3+
Q×b8(Bç1) 4.B×é3(é7)+
Q×g8(Sb1) 5.Sd2+
Q×ç4(Bf1)‡

HW6) Sol: 1.Be6 e×f6(f2)

2.Ra7 Bg7 3.Ra1+
B×f8(Bç1) 4.Bd2+
B×ç5(Sg1) 5.S×h3(Bç8)+
B×e6(Bf1) 6.Be2+
B×f5(Sb1)‡

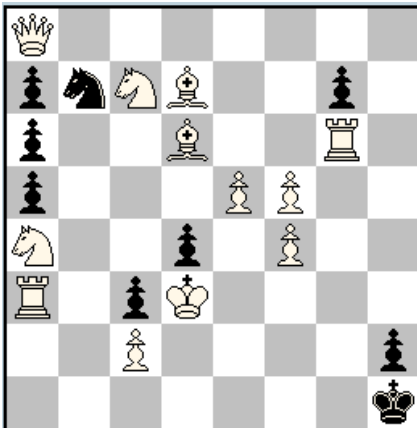
HW6



Heinz WINTERBERG
Die Schwalbe 1992

s±6 (11+4) C+
Circé

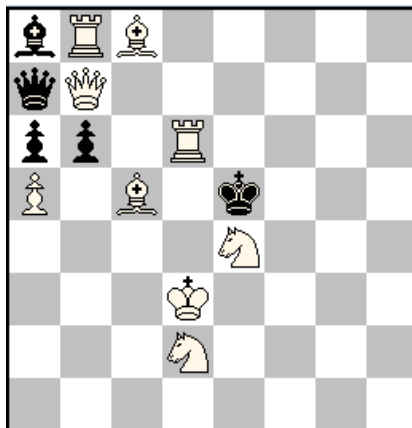
HW7



Heinz WINTERBERG
(zeenschach 1991)

s±9 (12+9)
Circé

HW8



Heinz WINTERBERG
(zeenschach 1991 (v))
1° Recommandé e.a.

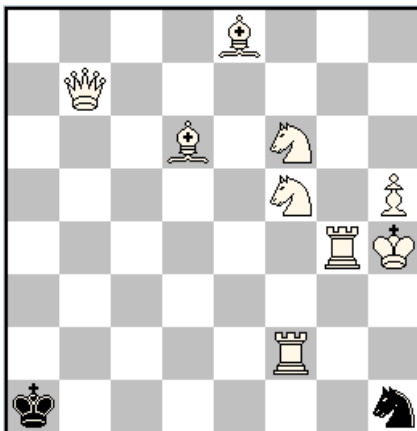
s±7 (9+5) C+
Circé

HW7) Sol: 1.Rg5! g6 2.Bé6 g×f5(f2) 3.K×d4(d7) d×é6(Bf1) 4.Sç5 a4 5.Bd3 a5 6.Sb5 a6 7.Ra1+ a×b5(Sb1) 8.S×ç3(ç7)+ ç×d6(Bç1) 9.Bé3+ d×ç5(Sg1)‡

HW8) Sol: 1.Sc4+! Kf4 2.Bé3+ Kf3 3.Qf7+ Kg2 4.Qf2+ Kh1 5.B×b6(b7) Q×b6(Bç1) 6.Rh6+ Q×h6(Ra1) 7.Bd2+ Q×d2(Bç1)‡

7.Manfred SEIDEL

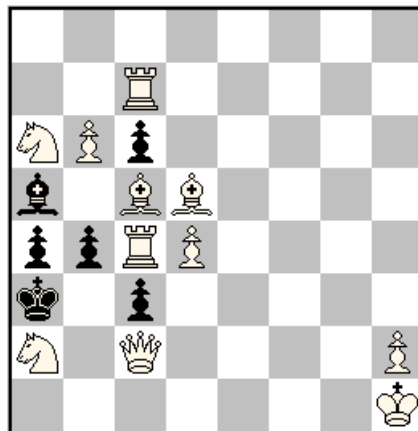
MS1



Manfred SEIDEL
Schach-Echo 1982

s±4 (9+2) C+
Circé

MS2



Manfred SEIDEL
(zeenschach 2000)

s±11 (11+6)
Circé

MS1) Sol: 1.Q×h1(Sg8)+ S×f6(Sg1) 2.Sf3+ S×é8(Bf1) 3.Bh3+ S×d6(Bç1) 4.Bg5+ S×f5(Sb1)‡

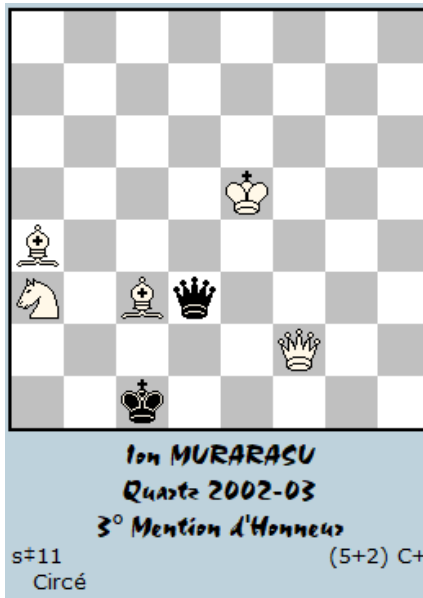
MS2) Sol: 1.h3! ç×d5(Bf1) 2.Kh2 d×ç4(Rh1) 3.S6×b4(b7) B×b4(Sg1) 4.Bd6 Bc5 5.Bg2 Bb4 6.Sç1 Bc5 7.Sd3 Bb4 8.Rç5 Ba5 9.d5 Bb4 10.Sç1 Ba5 11.R×a5(Bf8)+ B×d6‡

8. Ion MURĂRAȘU

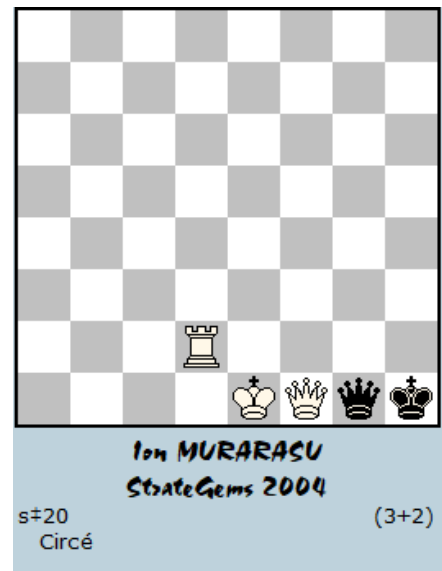
IM1

IM1) Sol: 1.Qf4+

1...Qé3+ 2.Kd5 Qd2+
 3.Kç4 Qé3 4.Bç2 Qd2
 5.Kb3 Qé3 6.Ka2 Qd2
 7.Ka1 Qé3 8.Q×é3(Qd8)+
 Qd2 9.Sb5 K×ç2(Bf1)
 10.Q×d2(Qd8)+ Kb3
 11.Qd1+ Q×d1‡
 1...Qd2 2.Kf5 Qé3 3.Kg4
 Qd2 4.Bf6 Qé3
 5.Q×é3(Qd8)+ Qd2
 6.Qç3+ Qç2 7.Kh3 Kd1
 8.Q×ç2(Qd8)+ Ké1
 9.Qd2+ Kf1 10.Qg2+ Ké1
 11.Bh4+ Q×h4(Bç1)‡



IM2

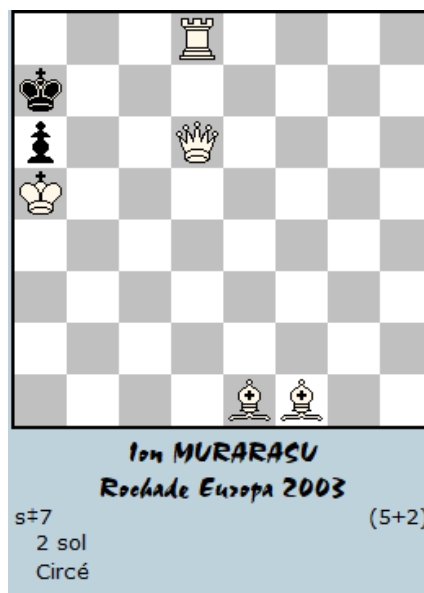


IM2 Sol: 1.Q×g1(Qd8)+ K×g1(Qd1) 2.Qg4+ Kh1 3.Qé4+ Kg1 4.Rg2+ Kh1 5.Rg5+ Kh2 6.Qé5+ Kh3 7.Qh8+ Q×h8(Qd1) 8.Qg4+ Kh2 9.Qg3+ Kh1 10.Qf3+ Kh2 11.Rg2+ Kh1 12.Rf2+ Kg1 13.Qg3+ Kh1 14.Qh2+ Q×h2(Qd1) 15.Kd2+ Qg1 16.Qf3+ Qg2 17.Kç1 Kh2,Kg1 18.R×g2(Qd8)+ Kh1 19.Rb2+ Kg1 20.Qd1+ Q×d1‡

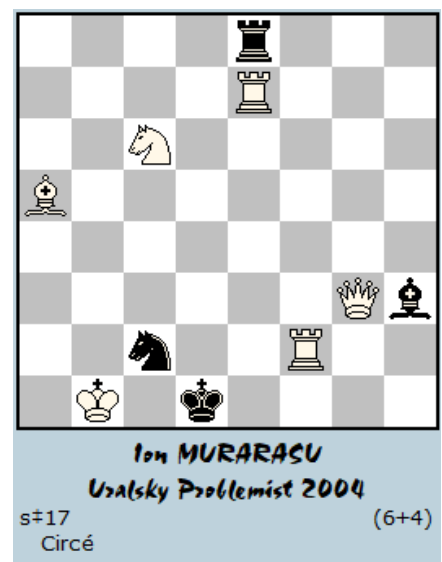
IM3

IM3) Sol: I) 1.Bb4!

Kb7 2.Rb8+ Ka7 3.Qd7+
 K×b8(Ra1) 4.Ra4 Ka8
 5.Qç8+ Ka7 6.Bb5
 a×b5(Bf1) 7.B×b5(b7) b6‡
 II) **1.Bh4!** Kb7 2.Qç7+
 K×ç7(Qd1) 3.B×a6(a7) Kç6
 4.Rd7 Kç5 5.Bd8 Kç6
 6.Qa4+ Kç5 7.Bb6+
 a×b6(Bç1)‡



IM4



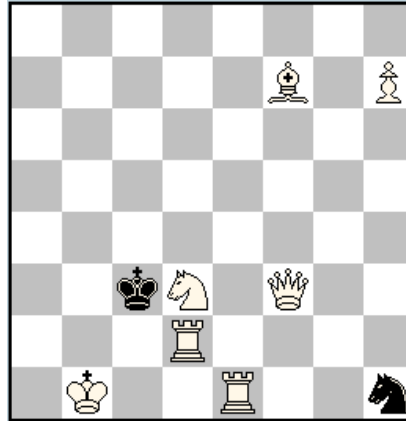
IM4 Sol: 1.Re1+ S×e1(Ra1) (1. ...Rxe1(Ra1) 2.Qf3+ Re2 3.Ka2+ etc.) 2.Qb3+ Sc2 3.Qf3+ Re2 4.Ka2+ S×a1 5.Qxe2(Ra8)+ Kc1 6.Rf1+ B×f1(Rh1) 7.Q×f1(Bc8)+ Kc2 8.Qg2+ Kd3 9.Se5+ Ke3 10.Qf3+ Kd4 11.Qd5+ Ke3 12.Qd4+ Ke2 13.Rh2+ Kf1 14.Rf2+ Kg1 15.Rb2+ Kh1/Kf1 16.Qe4/Qd3+ Kg1 17.Qb1+ R×a5(Bc1)‡

9. Paul RĂICAN

PR1) Sol: 1.h8B+! Kxd2(Ra1)
2.Re2+ Kd1 3.Sf2+ Sxf2(Sg1)
4.Rb2+ Ke1 5.Ka2+ Sd1
6.Qa3 Kf1 7.Sh3 Ke1 8.Bb3
Kf1 9.Bc3 Sxc3(Bc1)‡

PR2) Sol: 1.Rd2+ Ké1
2.Bd3+ Bxd3(Bf1) 3.Bh3+ Bf1
4.Qé4+ Bé2 5.Rxe2(Bç8)+
Kd1 6.Bg5+ Sxg5(Bç1)
7.Bé3+ Kxe2(Rh1) 8.Bg4+
Sf3 9.Bb6+ Kd2 10.Rhd1+
Kç3 11.Rd3+ Kç2 12.Rd6+
Kç3 13.Qç4+ Kxç4(Qd1)
14.Qd4+ Sxd4(Qd1)‡

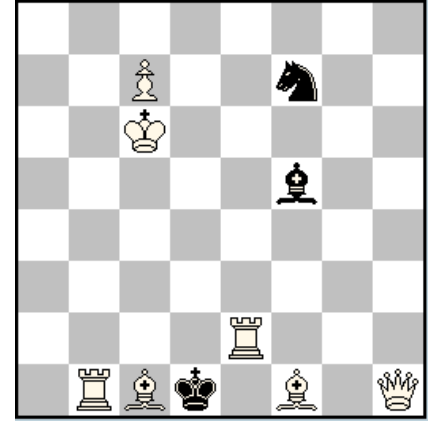
PR1



Paul RĂICAN
Die Schwalbe 2019

s=9 (7+2)
Circé

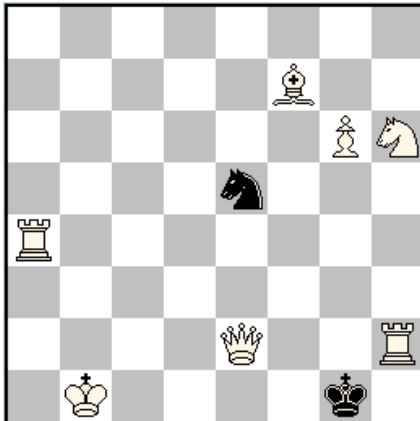
PR2



Paul RĂICAN
Usatky Problemist 2002

s=14 (7+3)
Circé

PR3

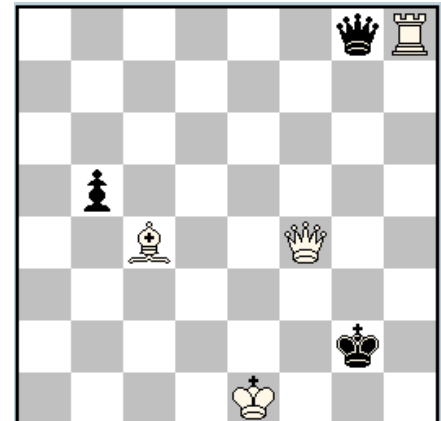


Paul RĂICAN
Problem Paradise 2003
6^o Recommandé

s=17 (7+2)
Circé

PR3) Sol: 1.Rg2+ Kh1
2.Qh5+ Kxg2(Rh1) 3.Qh3+
Kf2 4.Rf1+ Ké2 5.Ré4+ Kd2
6.Rf2+ Kd1 7.Qh1+ Sxf7(Bf1)
8.Bb5+ Sxh6(Sg1) 9.Qh5+
Sg4 10.Rf1+ Kd2 11.Sf3+
Kç3 12.Rç1+ Kb3 13.Qd5+
Ka3 14.Qç5+ Kb3 15.Ré3+
Sxe3(Ra1) 16.Bç4+
Sxç4(Bf1) 17.Sd2+
Sxd2(Sg1)‡

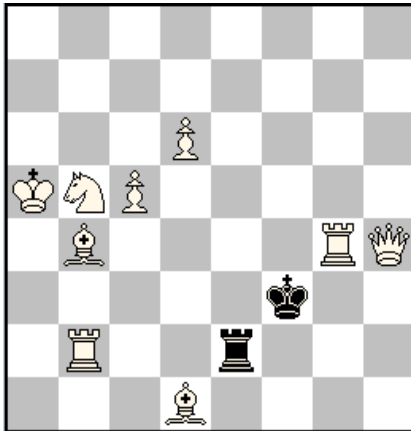
PR4



Paul RĂICAN
Diagrammes 2010

s=12 (4+3)
Circé

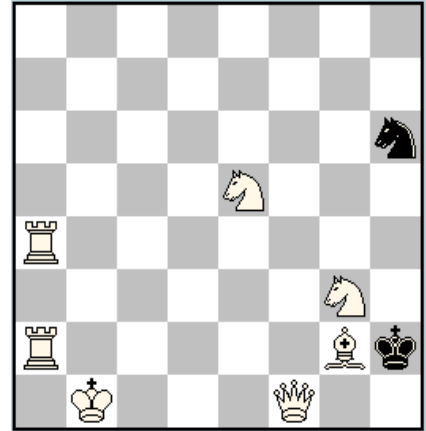
PR4) Sol: 1.Bd5+ Kg1 2.Rxg8(Qd8)+ Qg5 3.Rxg5(Qd8)+ Qxg5(Ra1) 4.0-0-0+ Qxd5(Bf1)
5.Bg2+ Qxg2(Bf1) 6.Bxb5(b7)+ Qf1 7.Rxf1(Qd8)+ Kg2 8.Qf3+ Kh2 9.Rf2+ Kg1 10.Rg2+ Kh1
11.Rb2+ Kg1 12.Qd1+ Qxd1‡

PR5

Paul RAICAN
Probleemblad 2004 (v)

s=8 (9+2)
b) ♖a5→a3
Circé

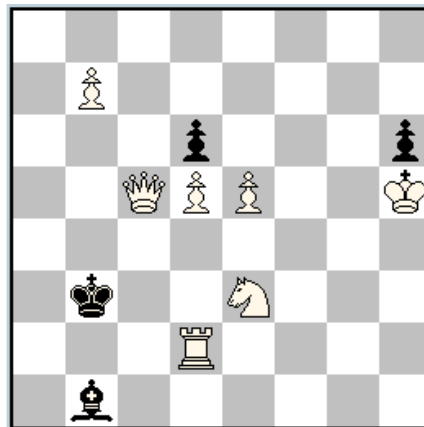
PR5) Sol: a) **1.Qh3+** Kf2
2.Qg3+ Kf1 3.Rf4+ Rf2 4.Bg4
Rf3 5.Bç8 Rf2 6.Ba6 Rf3
7.Q×f3(Ra8)+ Kg1 8.Qd1+
R×a6(Bf1)‡
b) **1.Sc3!** Ké3 2.Rg3+ Kf2
3.Sé4+ Kf1 4.Qh3+ Rg2
5.Bb3 Kg1 6.Ba2 Kf1 7.Rgb3
Kg1 8.Rb1+ R×a2(Bf1)‡
Correction publiée dans
Probleemblad 4/2017

PR6

Paul RAICAN
Probleemblad 2017

s=11 (7+2)
Circé

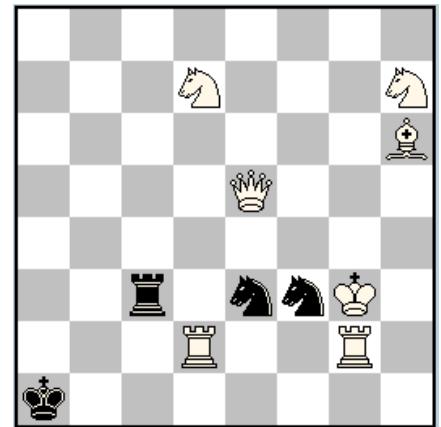
PR6) Sol: **1.Bd5+** K×g3(Sg1) 2.Rg4+ S×g4(Rh1) 3.Ra3+ Sé3 4.Qf2+ K×f2(Qd1) 5.Qf3+ Ké1
6.Sd3+ Kd2 7.Qf2+ Kd1 8.Bb3+ Sç2 9.Sé2+ Kd2 10.Séç1+ Kç3 11.Ba2+ S×a3(Ra1)‡

PR7

Paul RAICAN
The Problemist 2007 (v)

s=19 (7+4)
Circé

PR7) Sol: **1.b8=R+!** Ka4
2.Rb4+ Ka3 3.Ré4+
d×ç5(Qd1) (3. ...Kb3?
4.Qc3+) 4.Qç1+ Kb3 5.Qç3+
K×ç3(Qd1) 6.Qb3+
K×d2(Ra1) 7.Qç2+ Ké1 8.é6
ç4 9.é7 ç3 10.Sf5+ Kf1
11.é8=B Kg1 12.Bb5 Kh1
13.Rh4+ Kg1 14.Kg4 h5+
15.Kh3 Kh1 16.Ba6 Kg1
17.R×b1(Bç8)+ B×a6(Bf1)
18.Bg2+ Bf1 19.Sg3
B×g2(Bf1)‡

PR8

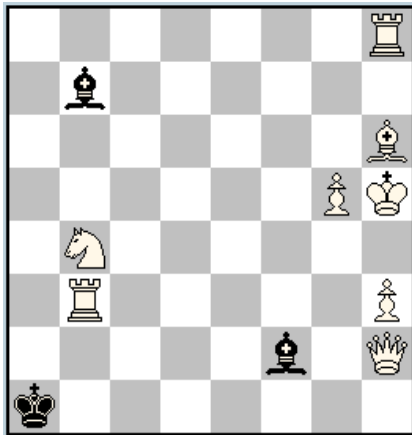
Paul RAICAN
Ion MURARASU
Die Schwalbe 2004

s=8 (7+4)
Circé

PR8) Sol: **1.Rd1+** S×d1(Rh1) 2.R×d1(Sg8)+ S×h6(Bc1) 3.B×h6(Sb8)+ S×d7(Sb1) 4.Sxc3(Rh8)+
R×h7(Sb1) 5.Sa3+ R×h6(Bc1) 6.Bg5+ S×g5(Bc1) 7.Se4+ Sxe5 8.Bf4+ S×e4(Sb1)‡
Testé par WinChloe (dans ~23 heures)

10. Peter GRUNDER

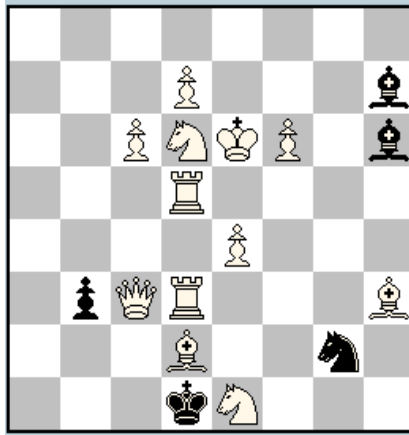
PG1



Peter GRUNDER
Die Schwalbe 1995

s±9 (8+3) C+
Circé

PG2



Wladimir NAEF
Peter GRUNDER
Die Schwalbe 1995
4° Recommandé

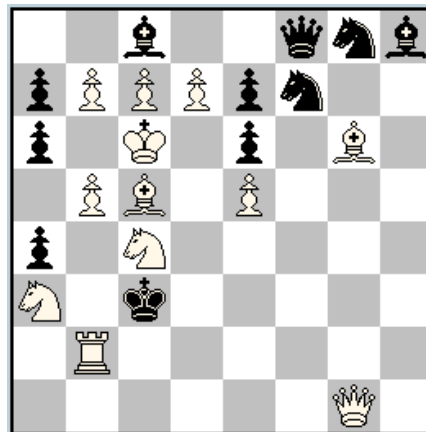
s±6 (12+5) C+
Circé

PG1) Sol: a) **1.Qg1+** B e1
2.Qd4+ Bç3 3.Ra8+ Ba6
4.h4 Bb2 5.R×a6(Bç8)+ Kb1
6.R×b2(Bf8)+ Kç1 7.g6+
B×h6 8.Sd3+ Kd1 9.Qg4+
B×g4‡

PG2) Sol: **1.Bg4+** B×é4(é2)
2.B×h6(Bf8)+ B×d3(Rh1)
3.S×g2(Sg8)+ B×d6(Sg1)
4.Q×b3(b7)+ b×ç6(ç2)
5.Qb1+ S×h6(Bç1)
6.R×d3(Bç8)+ B×d7(d2)‡

11. Michael HERTZBERG

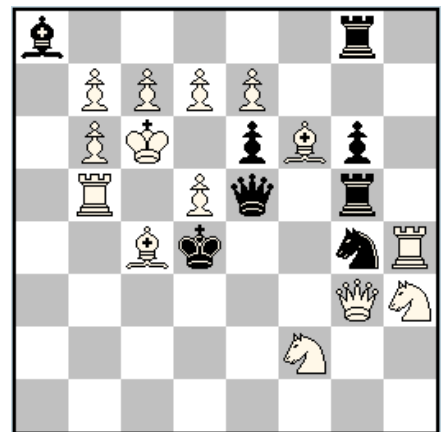
MH1



Michael HERTZBERG
Die Schwalbe 1999
1° Recommandé

s±3 (12+11) C+
Circé

MH2



Michael HERTZBERG
dédié à T. Schubert
Europa Rochade 1988-89 (v)
4° Prix

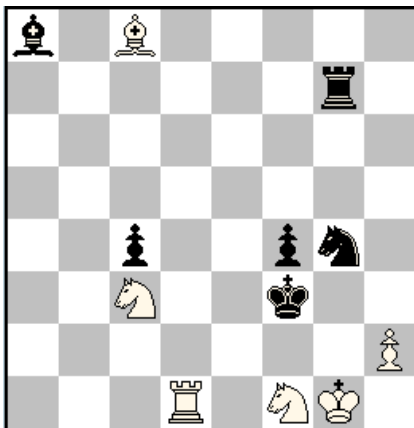
s±4 (14+8) C+
Circé

MH1) Sol: **1.Qh1!** [2.Bb4+ Kd4
3.Qd1+ B×d7(d2)‡]
1...Sf6 2.Sb1+ K×ç4 3.Qf1+
S×é5(é2)‡
1...Qh6 2.Qç1+ Q×ç1(Qd1)
3.Q×ç1(Qd8)+ Q×ç7(ç2)‡
1...a5 2.Rç2+ Kb3 3.Qb1+
B×b7(b2)‡

MH2) Sol: **1.d6!** [2.Rd5+
é×d5(Rh1) 3.B×é5(Qd8)+
R×é5(Bç1) 4.Rd1+
Q×d7(d2)‡]
1...Rd8 2.R×g4(Sg8)+
R×g4(Rh1) 3.Qé3+
K×é3(Qd1) 4.Ré1+ S×é7(é2)‡
1...Q×f6(Bç1) 2.Qç3+
K×ç3(Qd1) 3.Bd2+ Kd4
4.Qa1+ B×b7(b2)‡

12. Stephen ROTHWELL

SR



Stephen ROTHWELL
Die Schwalbe 1997
4^o Mention d'Honneur

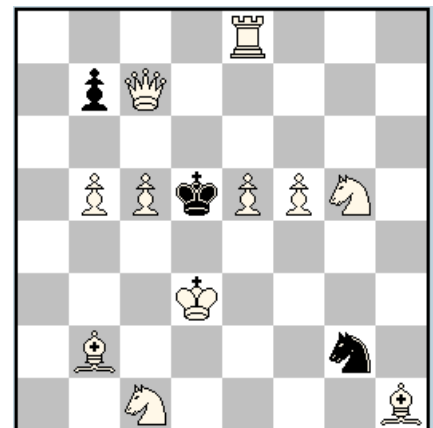
s=8 (6+6) C+
Circé

SR) Sol: a) 1.Sd2+! Ké3
2.S×ç4(ç7)+ Kf3 3.Sd2+ Ké3
4.Sf1+ Kf3 5.Bb7+ B×b7,ç6
6.Sd2+ Ké3 7.Sç4+ Kf3
8.Rf1+ Sf2‡

ID) Sol: 1.Sa2! b6 2.Bç1
b×ç5(ç2) 3.Sb4+ ç×b4(Sg1)
4.ç4+ b×ç3 e.p.(ç2) 5.Bd2
ç×d2(Bç1) 6.B×d2(d7) d6
7.S1h3 d×é5(é2) 8.Sf4+
é×f4(Sg1) 9.é4+ f×é3 e.p.
(é2) 10.Sf7 é×d2(Bç1)
11.B×d2(d7) d6 12.Ré5+
d×é5(Ra1) 13.Qç3 é4‡

13. Imants DULBERGS

ID

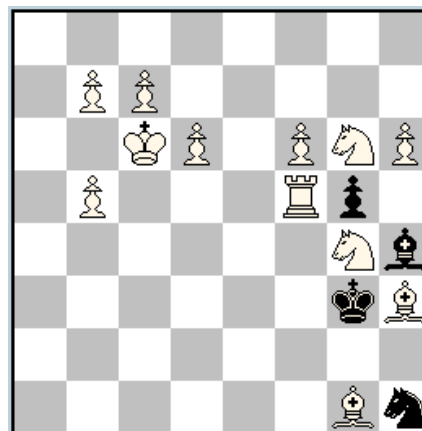


Imants DULBERGS
The Problemist 1990
Mention d'Honneur

s=13 (11+3)
Circé

14. Gunter GLASS

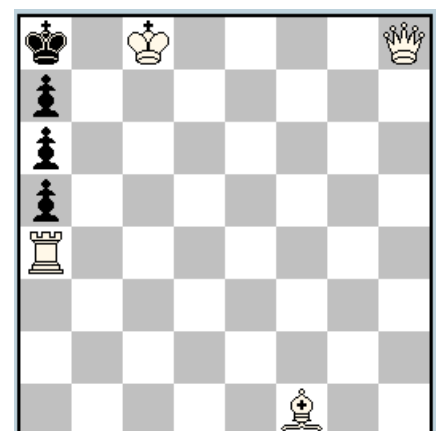
GG1



Günter GLASS
Zeitschach 1975
4^o-5^o Prix e.a.

s=6 (12+4) C+
Circé

GG2

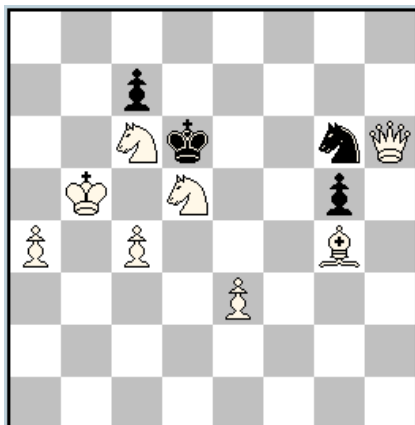


Günter GLASS
Zeitschach 1986
1^o Mention d'Honneur

s=8 (4+4) C+
Circé

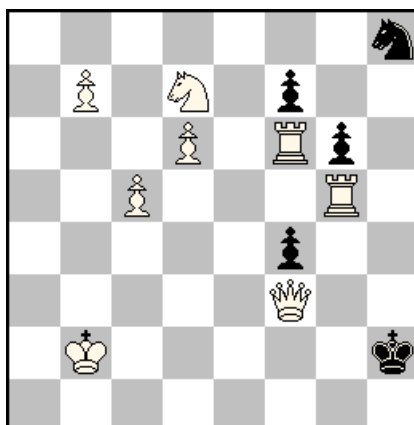
GG1) Sol: 1.Rf2! S×f2(Ra1)
2.Ra3+ Sd3 3.S4é5 g4 4.Bg2
Bg5 5.R×d3(Sg8)+ B é3 6.Sd7
Sé7‡

GG2) Sol: 1.Ra3! a4 2.Qd8
a5 3.Bb5 a6 4.Kç7+ Ka7
5.Kç6 a×b5(Bf1) 6.K×b5(b7)
b6 7.Bç4 Kb7 8.R×a4(a7) a6‡

GG3

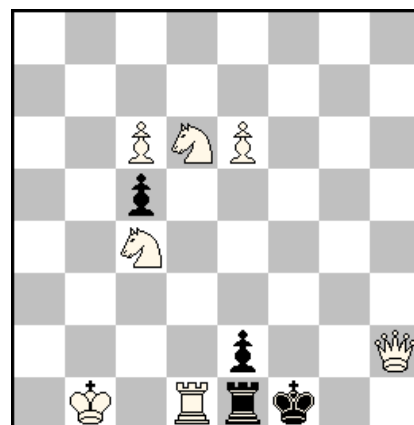
Günter GLASS
Schach-Echo 1976
7° Prix

s±7
Circé (8+4) C+

GG4

Günter GLASS
Leenschach 1979

s±8
Circé (8+5)

GG5

Günter GLASS
Schach-Echo 1977

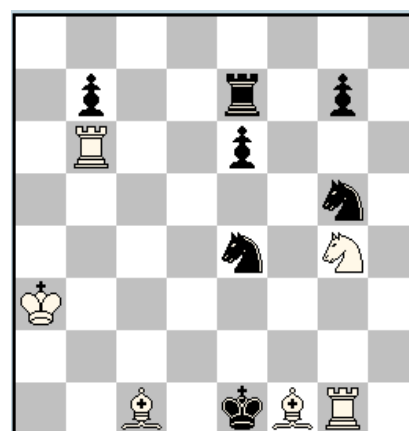
s±6
Circé (7+4) C+

GG3) Sol: a) **1.Sf4!** g×f4(Sg1) 2.Sf3 f×é3(é2) 3.Qf4+ Sé5 4.Sd2 é×d2(Sg1) 5.Q×d2(d7)+ Sd3 6.Qb4+ Sç5 7.a5 d×ç6(Sb1)‡

GG4) Sol: **1.R5×g6(Pg7)!** g×f6(Ra1) 2.Ra2 f5 3.Sé5 f6 4.Sf7 S×f7(Sb1) 5.Ka1+ S×d6(d2) 6.d4+ S×b7(b2) 7.b3+ S×ç5(ç2) 8.ç3+ S×b3(b2)‡

GG5) Sol: **1.Sb6!** ç4 2.Sd×ç4(ç7) ç×b6(Sg1) 3.S×é2(é7) b5 4.Sb2 b4 5.Ka1 b3 6.Sg1 R×d1(Rh1)‡

15. Tadashi WAKASHIMA

TW

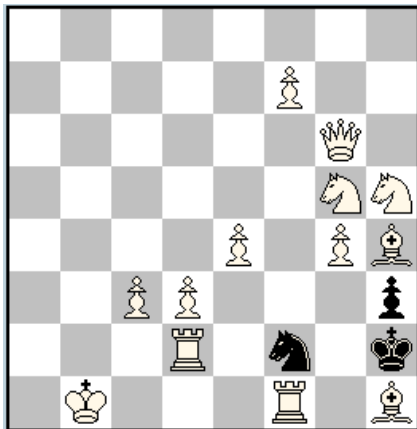
Tadashi WAKASHIMA
Probleemblad 1999
7° Prix

s±40
Circé (6+7)

TW) Sol: **1.Ba6+!** b×a6(Bf1) 2.Bb5+ a×b5(Bf1) 3.Bç4+ b×ç4(Bf1) 4.Bd3+ ç×d3(Bf1) 5.Bé2+ d×é2(Bf1) 6.Bh3+ S×h3(Bf1) 7.B×é2+ S×g1(Ra1) 8.Bh6+ g×h6(Bç1) 9.Bg5+ h×g5(Bç1) 10.Bf4+ g×f4(Bç1) 11.Bd2+ S×d2(Bç1) 12.Bb2+ Sb1+ 13.R×b1(Sg8)+ Kd2 14.Rd6+ Kç2 15.Bd3+ Kd2 16.Rd1+ K×d1(Rh1) 17.R×g1(Sb8)+ Kd2 18.Bé2+ Kç2 19.Sé3+ f×é3 20.Bd1+ Kb1 21.Bg4+ Kç2 22.Bf5+ é×f5(Bf1) 23.Bd3+ Kd2 24.Bé2+ Kç2 25.Bd1+ Kb1 26.Bf3+ Kç2 27.Bé4+ f×é4(Bf1) 28.Bd3+ Kd2 29.Bé2+ Kç2 30.Bd1+ Kb1 31.Bf3+ é×f3(Bf1) 32.Bé2+ f×é2(Bf1) 33.B×é2+ Kç2 34.Bd1+ Kb1 35.Bf3+ Kç2 36.Bé4+ R×é4(Bf1) 37.Bd3+ Kd2 38.Bb5+ Rd4 39.Rd1+ Kç2 40.Ba4+ R×a4(Bf1)‡ Length record. Popandopoulo theme.

16. Frantisek SABOL

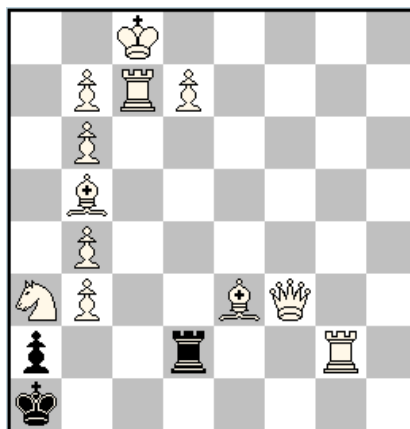
FS1



Frantisek SABOL
The Problemist 1993
1^o Mention d'Honneur

s=6 (13+3) C+
Circé

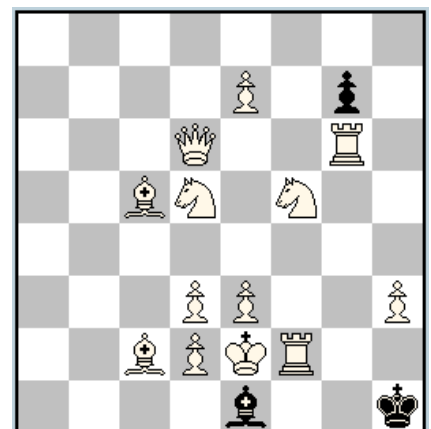
FS2



Frantisek SABOL
Schach-Echo 1985-86
3^o Prix

s=4 (12+3) C+
Circé

FS3



Frantisek SABOL
harmonie 1992 (v)

s=6 (13+3) C+
Circé

FS1) Sol: a) 1.f8=Q! zz

1...S×é4(é2) 2.Bg3+ S×g3(Bç1) 3.é3+ Sé2 4.Rg1
K×g1(Ra1) 5.Qf1+ Kh2 6.Rb2 S×ç3(ç2) †
1...S×g4(g2) 2.g×h3(h7)+ Sf2 3.é5 h6 4.Qf×h6(h7)
h×g6(Qd1) 5.Kç1 g×h5(Sb1) 6.Rç2 S×d3(d2) †

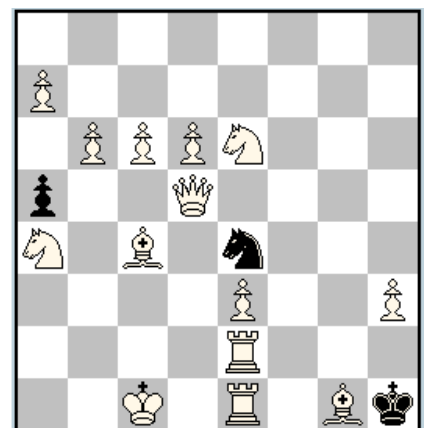
FS2) Sol: 1.Qf6+!

1...Rb2 2.d8=B R×b3(b2) 3.Qf1+ R×é3(Bç1)
4.B×é3(Rh8)+ R×d8(Bç1) †
1...Rd4 2.b8=B [3.Qf1+ Rd1 4.Q×d1(Ra8)+
R×b8(Bç1) †] R×b4(b2) 3.Rg1+ R×b5(Bf1)
4.B×b5(Ra8)+ R×b8(Bç1) †

FS3) Sol: 1.Sb4! B×d2 2.K×d2(Bf8) B×é7(é2)

3.S×é7(Bf8) B×é7(Sg1) 4.Q×é7(Bf8) B×é7(Qd1)
5.B×é7(Bf8) B×é7(Bç1) 6.Sf3+ B×b4(Sg1) †

FS4

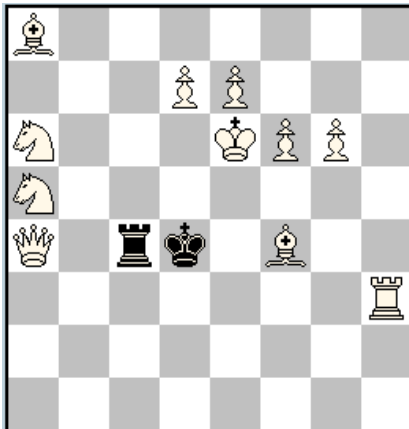


Frantisek SABOL
diagrammes 1992

s=10 (14+3)
Circé

FS4) Sol: 1.Sc3! a4 2.a8=Q a3 3.Qa6 a2 4.B×a2(a7) a×b6(b2) 5.Q×b6(b7) b×ç6(ç2)
6.Qb×ç6(ç7) ç×d6(d2) 7.Qç×d6(d7) d×é6(Sb1) 8.Q6é5 é×d5(Qd1) 9.Bh2+
S×ç3(Sg1) 10.Sf3+ S×a2(Bf1) †

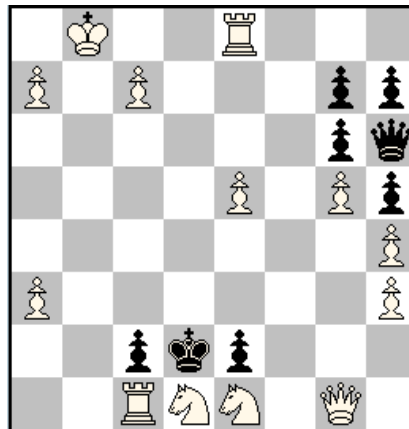
FS5



Frantisek SABOL
The Problemist 1995 (v)
 5^o Mention d'Honneur

s=4 (11+2)
 2 sol
 Circé

FS6



Frantisek SABOL
Probleemblad 1985
 3^o Recommandé

s=4 (13+8)
 b) wRe8 → e5
 Circé

FS5) Sol: I) 1.Bc7! Rb4 2.Qa1+ Rb2 3.Qg1+ Rf2 4.Kd6 Rxf6(f2)‡

II) **1.Sc6+!** Ké4 2.Qç2+ R×ç2(Qd1) 3.Qh1+ Rg2 4.f7 R×g6(g2)‡

FS6) Sol: a) 1.c8=S!

Q×g5(Pg2) 2.Rd8+ Q×d8(Ra1) 3.R×ç2(ç7)+ K×d1(Sb1) 4.Sd2+ Q×ç8(Sb1)‡

b) **1.a8=B!** Q×g5(g2) 2.Rd5+ Q×d5(Rh1) 3.Qé3+ K×é1(Sg1) 4.S×é2(é7)+ Q×a8(Bf1)‡

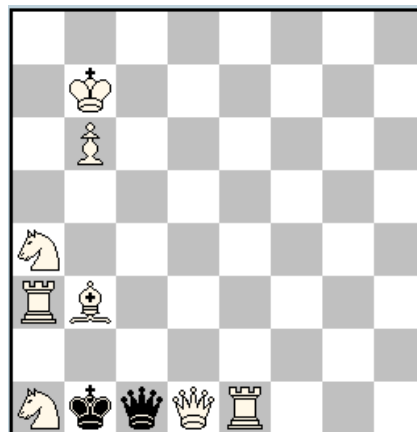
FS7) Sol: 1.Qd2!

1...Q×é1 2.Ba2+ K×a1(Sg1) 3.Qd4+ Qç3 4.Ka6 Qb2 5.Sç5 Qç3 6.Q×ç3(Qd8)+ Q×b6(b2)‡
 1...Qd1 2.Sç2 Qç1 3.Ka8 Qd1 4.b7 Qç1 5.b8=B Qd1 6.R×d1(Qd8)+ Q×b8(Bç1)‡

S8) Sol: 1.R8×e6(Pe7)! zz

1...é×d6(Ra1) 2.R×d6(d7) d×ç6(Sb1) 3.Qç3+ Qd2 4.S×d2(Qd8)+ Q×b6(Bç1)‡
 1...é×f6(Sg1) 2.g×f6(f7) f×é6(Rh1) 3.Qé3+ Qé2 4.S×é2(Qd8)+ Q×a8(Bf1)‡

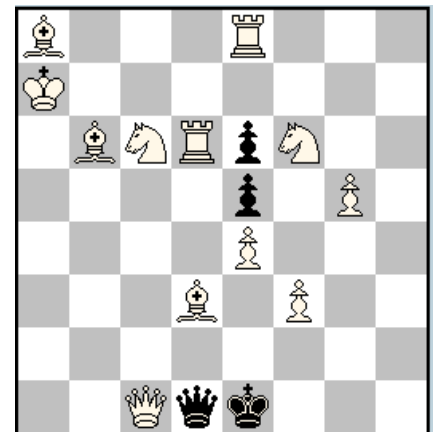
FS7



Frantisek SABOL
Leenschach 1985
 2^o Mention d'Honneur

s=6 (8+2)
 Circé

FS8

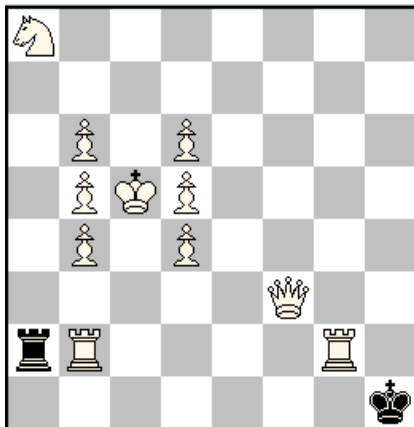


Frantisek SABOL
Leenschach 1991

s=4 (12+4)
 Circé

17. Krasimir GANDEV

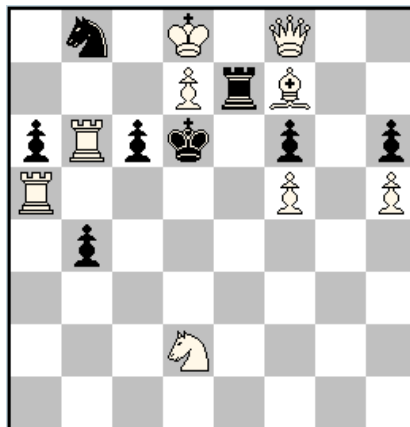
KG1



Krasimir GANDEV
Schach-Echo 1974
4^o-5^o Prix e.a.

s≠5 (11+2) C+
Circé

KG2



Petko A. PETKOV
Krasimir GANDEV
Schach-Echo 1974
4^o-5^o Prix e.a.

s≠4 (9+8) C+
Circé

KG1) Sol: 1.Qa3 Ra1
2.Q×a1(Rh8)+ R×a8(Sb1)
3.Sa3+ R×a3(Sg1) 4.Sh3+
R×h3(Sb1) 5.Sc3+
R×c3(Sg1)‡ Peut-être le
premier problème s# Circé
publié. Juge: P. Monreal

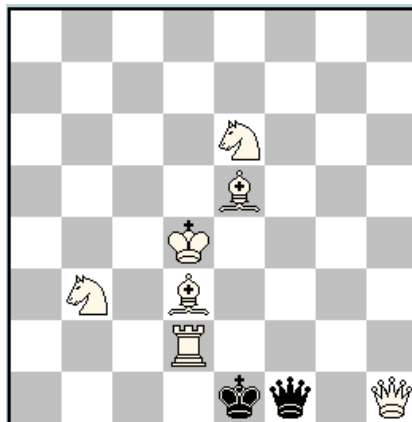
KG2) Sol: 1.Be8 zz Sxd7
2.Bxd7(Sg8) b3 3.Bc8 b2
4.Q×e7(Rh8)+ Sxe7(Qd1)‡
1. ... b3 2.Q×f6(Bf7)+ Re6
3.Q×e6(Ra8)+ fxe6(Qd1)
4.Sxb3(Bb7)+ Sxd7(Bd2)‡

KG3) Sol: 1.Bb5! zz

1. ... Qg1+ 2.Kd5 Qf1 3.Bc6
Qg1 4.Bg3+ Kf1 5.Sbd4
Q×d4(Sg1)‡
1. ... Q×b5(Bf1) 2.Bg2+ Qf1
3.Qg1 Q×g2(Bf1) 4.Bd3+ Qf1
5.Sbc5 Q×d3(Bf1)‡

KG4) Sol: 1.Qb7+ Kd6 2.Qd7+
Kç5 3.Qd6+ Kç4 4.Qd5+
K×ç3(ç2) 5.Qd2+ Kç4 6.Qd3+
Kç5 7.Qd4+ Kç6 8.Qd5+ Kç7
9.Qd7+ K×b8(Rna1)+
10.K×a1(Rnh8)+ Rn×h7(h2)
11.Q×h7(Rna8)+ K×a8(Rnh1)‡

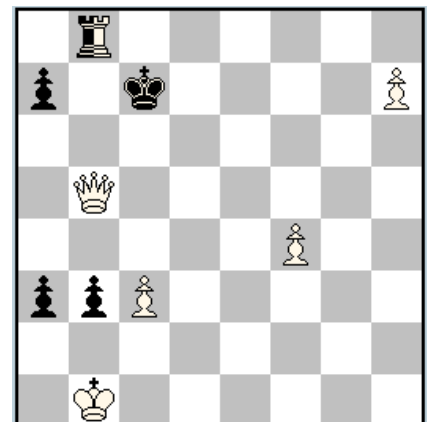
KG3



Krasimir GANDEV
The British Chess Magazine 1977
1^o Prix

s≠5 (7+2) C+
Circé

KG4

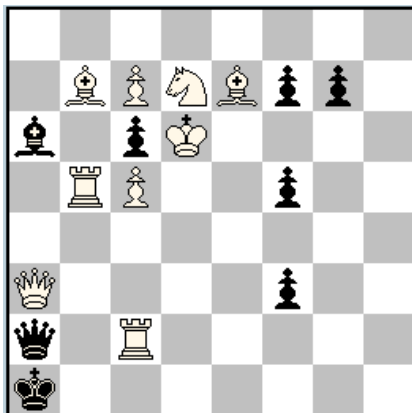


Krasimir GANDEV
The Problemist 1983
3^o Prix

s≠11 (5+4+1)
Circé

Krasimir GANDEV (b.1946 – d.2019) a été une belle surprise. Il est peut-être celui qui a découvert cette combinaison s#/Circé.

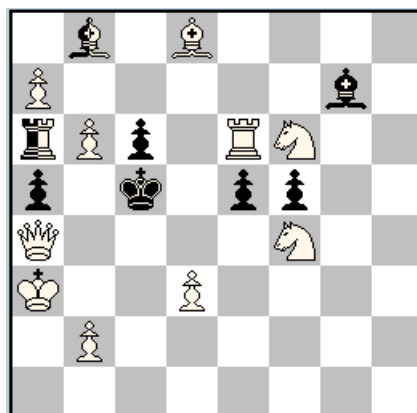
KG5



Krasimis GANDEV
Shakhmatna Mistl 1989

s±4 (9+8)
Circé

KG6



Krasimis GANDEV
dédié à P. Kniest pour ses 60 ans
(eenschach 1974
2° Mention d'Honneur

s±3 (10+6+2) C+
Circé

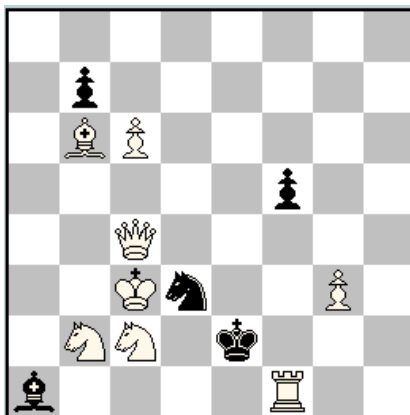
KG5) Sol: 1.Rc3! [2.Qç1+ Qb1 3.R×b1(Qd8)+ Ka2 4.Qd2+ Q×ç7(ç2)‡] 1...f6 2.Q×a2(Qd8)+ K×a2(Qd1) 3.Qb3+ Ka1 4.Rç1+ Q×d7(Sb1)‡ 1...B×b7(Bf1) 2.Rb1+ K×b1(Rh1) 3.Bç4+ Q×ç4(Bf1) 4.B×ç4(Qd8)+ Q×é7(Bç1)‡

KG6) Sol: 1.b3! [2.R×é5(é7)+ nB×é5(Ra1) 3.Qb4+ a×b4(Qd1)‡] 1...nR×b6(b2) 2.Sé4+ f×é4(Sb1) 3.Bé7+ K×b6(nRa1)‡ 1...nB×a7(a2) 2.d4+ é×d4(d2) 3.b×a7(nBf8)+ B×f8(nBç1)‡

KG6 est une réalisation qui surpasse son époque. Deux mats avec chacun des deux pieces neutres – Tour et Fou - sont assez difficile à bâtir.

18. Heinz ZANDER

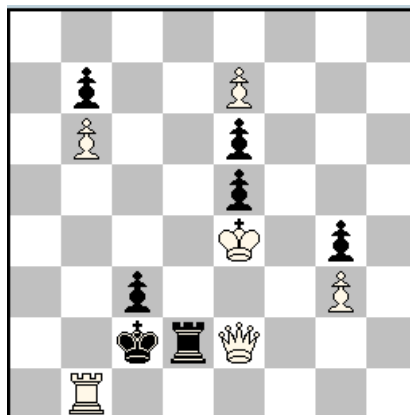
KZ1



Heinz ZANDER
Jörg KUHLMANN
(eenschach 1974 (v)

s±13 (8+5)
Circé

HZ2



Heinz ZANDER
Des Schnatterer 1974
2° Recommandé

s±6 (6+7) C+
Circé

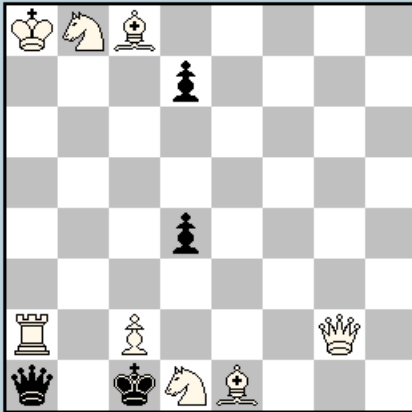
HZ1) Sol: 1.Sd4+! Ké3 2.S×f5(f7)+ Ké2 3.ç7 f6 4.Sd4+ Ké3 5.Sç2+ Ké2 6.Qé6+ Sé5 7.Qg4+ Sf3 8.ç8=B f5 9.Bé6 f4 10.Bb3 f×g3(g2) 11.Qé6+ Sé5 12.Qç4+ Sd3 13.Rg1 B×b2‡ Mat modèle et ingénieux, réalisé dans la première époque du Circé!

HZ2) Sol: 1.Ke3 é4 2.é8=R é5 3.R×é5(é7) é6 4.Réb5 é5 5.K×é4(é7) é6 6.Rd1 R×é2‡

HZ3) Sol: 1.R×a1(Qd8)+!
 K×d1(Sb1) 2.Sa3+ K×é1(Bç1)
 3.Qd2+ Kf1 4.Qé2+ Kg1
 5.Bb2+ Q×ç8(Bf1) 6.B×d4+
 Kh1 7.Bh3+ Q×b8(Sg1)‡

HZ4) Sol: 1.Rd3! Kb1 2.Rç3+
 Ka1 3.R×b3(b7) b6 4.Rh3 b3
 5.R×h1(Bç8)+ B×d7(Sb1)
 6.S×a3(Bf8)+ B×é7(Sg1)‡

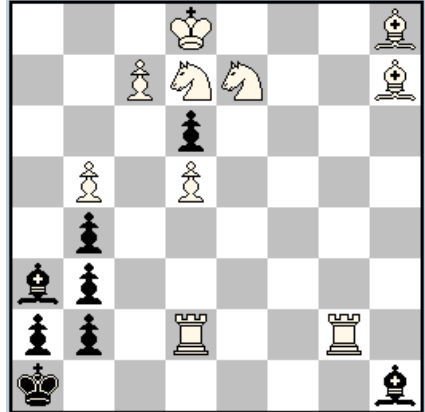
HZ3



Heinz ZANDER
 Schach-Echo 1977
 4^o Recommandé

s±7 (8+4) C+
 Circé

HZ4

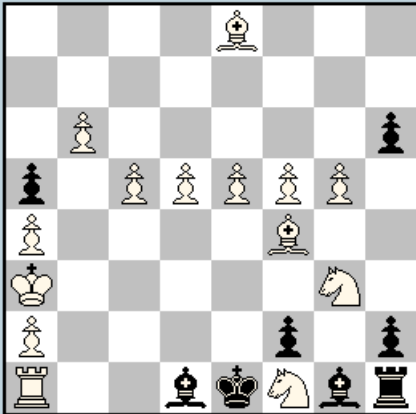


Heinz ZANDER
 Die Schwalbe 1986
 Recommandé

s±6 (10+8) C+
 Circé

19. Bernard COURTHIAU

BC



Bernard COURTHIAU
 Thèmes-64 1980
 1^o Prix

s±16 (14+8)
 Circé

BC) Sol: 1.Rc1! h5 2.B×h5(h7) h6 3.Bé3
 h×g5(g2) 4.B×g5(g7) g6 5.Bg4 g×f5
 6.B×f5(f7) f6 7.Bf4 f×é5(é2) 8.B×é5(é7) é6
 9.Bé4 é×d5(d2) 10.B×d5(d7) d6 11.Bd4
 d×ç5(ç2) 12.B×ç5(ç7) ç×b6(b2) 13.ç4 b5
 14.ç×b5(b7) b6 15.Bç4 b×ç5 16.b4
 ç×b4(b2), a×b4(b2)‡
 12. ...c6 13.B×c6(c7) c×b6(b2)
 14.B×b6(b7) B×c6 15.c4 c5 16.b4
 ç×b4(b2), a×b4(b2)‡

